

Infor mobility

We mean m-Business TM

Arabic Support for Palm OS (APOSTM) Software

User Manual



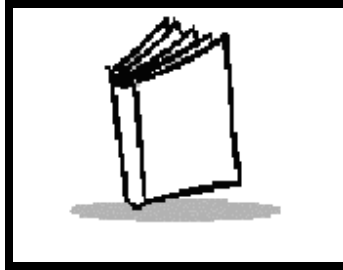


Table of Contents

| | |
|--|----|
| Introduction to APOSTM..... | 1 |
| System Requirements | 2 |
| <i>Minimum Requirements</i> | 2 |
| APOSTM INSTALLATION | 3 |
| <i>Windows Installation</i> | 3 |
| <i>Non-Windows Installation</i> | 3 |
| REGISTRATION | 3 |
| ACTIVATION | 7 |
| Using APOSTM | 9 |
| The Arabic Control Panel | 9 |
| Entering Arabic Data Into Your Handheld | 11 |
| Utilities | 13 |
| <i>HotSync®</i> | 13 |
| Technical Support | 13 |

Introduction to APOS™

Informobility L.L.C is proud to present to you the Arabic support for the Palm™ operating system APOS™. APOS™ provides full Arabic language support for the Palm Computing Platform™. It represents an architectural framework for the Arabic localization of the Palm. In other words, Palm-based applications can run on APOS™ without any further manipulation. These include both the Palm basic applications as well as any third party applications that you may purchase later. In addition to its support of the latest version of the Palm OS (5.0), APOS™ allows two editing modes: Left-to-Right (LTR) and Right-to-Left (RTL). Text can be input in either Arabic and/or English in both modes. Since different Arab countries use either Hindi or Arabic numeric formats, the system comes with both formats. Using a Microsoft Windows layout compatible soft keyboard or using Treo Keyboard accomplishes data entry into the Palm.

The Hotsync® operation does not require any special processing. A user can use the Palm desktop software to transfer Arabic and/or English data between the Palm and the Desktop with no pre- or post-processing. The Arabic text will be displayed correctly.

APOS also comes with a free copy of a fully bi-lingual Hijri calendar. The calendar displays the current Hijri month along with the corresponding Gregorian dates and observes Islamic holidays. It also allows you to convert a specific date from Hijri to Gregorian and vice-versa.

Informobility L.L.C strives to deliver high quality products to the market and constantly values its customers' input. If you find any defects or have a wish list of improvements for the next version, Informobility would be happy to receive your reports and comments by visiting our web site at www.ia-intl.com or www.ArabicPalm.com. APOS™ runs on every Palm OS™ powered device including all Palm devices, HandSpring Visors, IBM WorkPad, Symbol SPTs, Sony Clie, and Kyocera wireless phones.

This manual describes the Arabic support features and installation instructions of the product.

System Requirements

To install and operate APOST™ software, your system should have the following requirements:

Minimum Requirements

➤ **On your desktop**

- Arabic Windows 98, Windows 2000, Windows XP or later version. If you are not running an Arabic version of Windows, your Palm Desktop software will not display Arabic. You will see high-end Latin characters instead.
- IBM-compatible 486 computer or higher
- 16 MB RAM (memory) *minimum*.
- 20 MB available hard disk drive
- CD-ROM drive (you can also download the Palm Desktop software from <http://www.palm.com>).

➤ **On your handheld**

- Palm OS version 5 or later
- 200K of memory available on your handheld

APOS™ Installation

To install APOS™, perform the following steps:

Windows Installation

1. If you already have a copy of APOS™ on your Palm, including the demo copy, disable APOS™ and delete both **Arabic** and **Arabic Library**.
2. If you do not have the setup program, go to <http://www.infromobility.com/products/cdlogin.asp> to download the setup program
3. Run the *setup.exe* and follow through the installation. The setup program will guide you to sync APOS and all related files to your handheld device.

Non-Windows Installation

Find the \\Treo\Apos.prc and **and KoufiLoRes.pdb** on the CD. Use your HotSync® manager to install these two files on your Palm.

Registration

PLEASE NOTE THAT YOU HAVE TO REGISTER APOS BEFORE USING IT. IF YOU HAVE NOT DONE SO AFTER INSTALLATION, YOU CAN VISIT OUR WEB SITE AT www.infromobility.com/registration.

Also, you need to provide the *HotSync username* during the registration to get your registration key. The HotSync username can be obtained by tapping on the HotSync icon in the main application screen. The HotSync username appears on the upper right hand corner of the screen.



Figure 1

When you visit the registration web site, you will see the following web page.

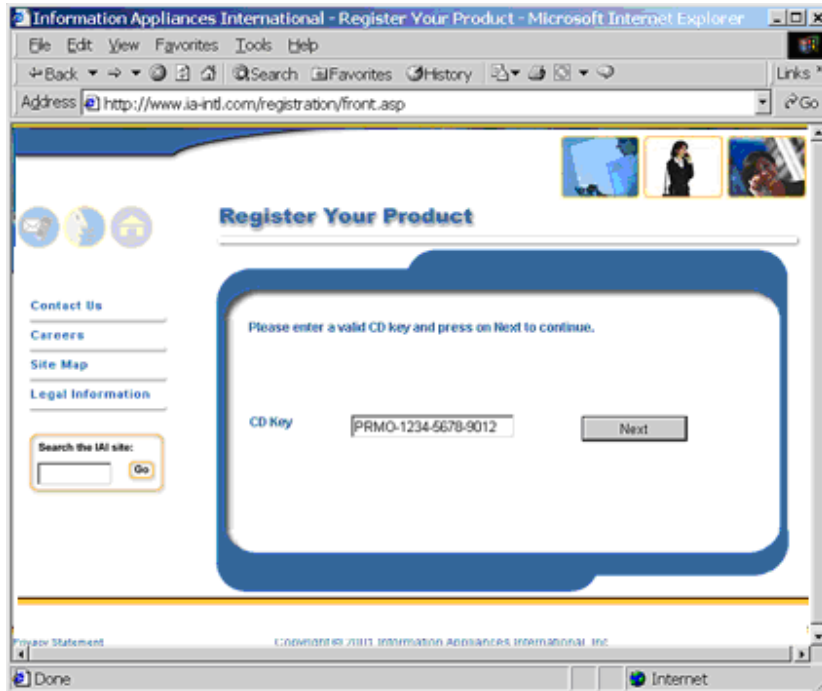


Figure 2

Enter the promotional code included with your installation program. If you enter your promotional CD key correctly, you should be presented with the following page:

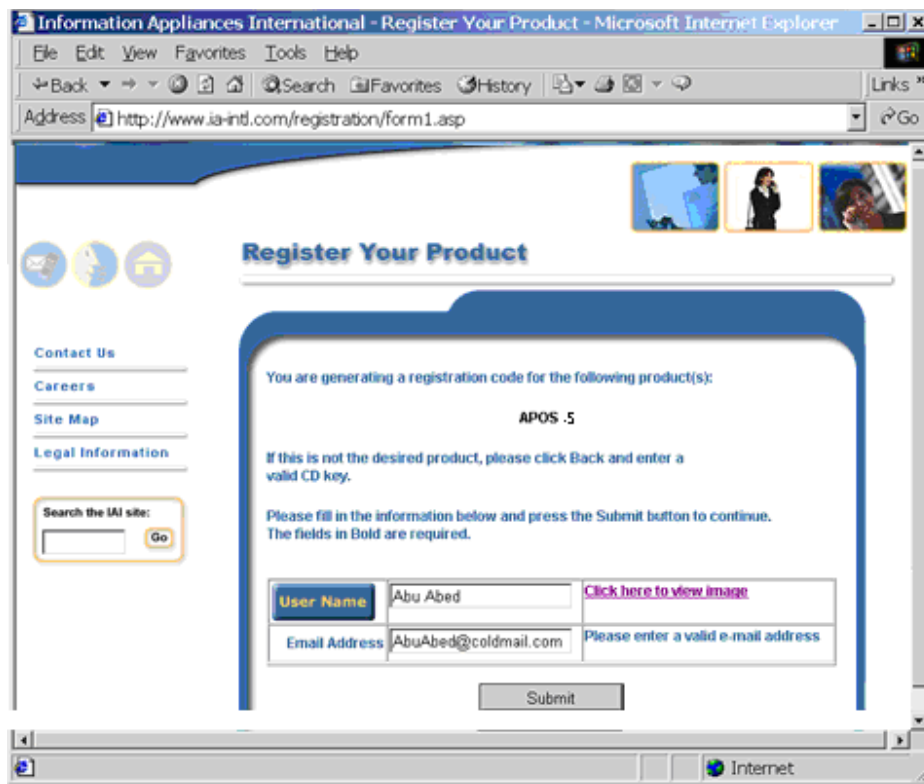


Figure 3

Enter your user name as indicated in Figure 1 and your e-mail address. It is very important to enter a valid e-mail address as the registration code will be e-mailed to that address.

After you click the Submit button, you'll be prompted to enter some personal information to identify you as a customer in our database using the following form:

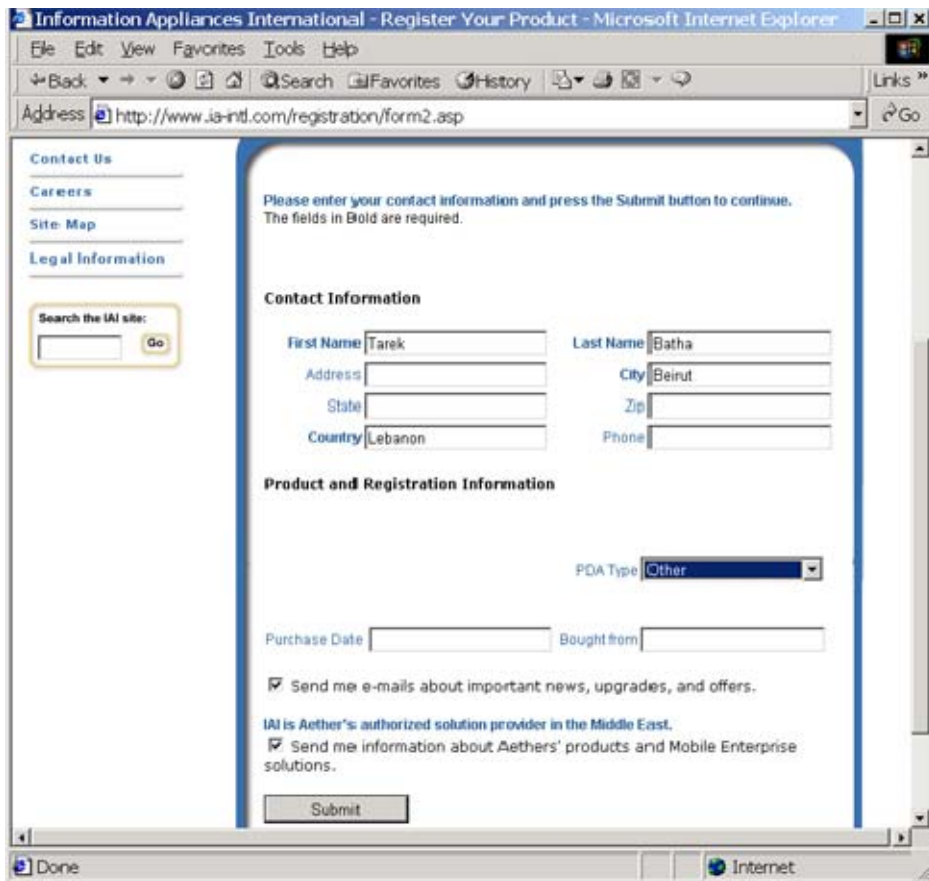


Figure 4

If you have filled all the required information on the above form, you will be presented with the registration key which you would use to activate your copy of APOS and start enjoying its rich features.

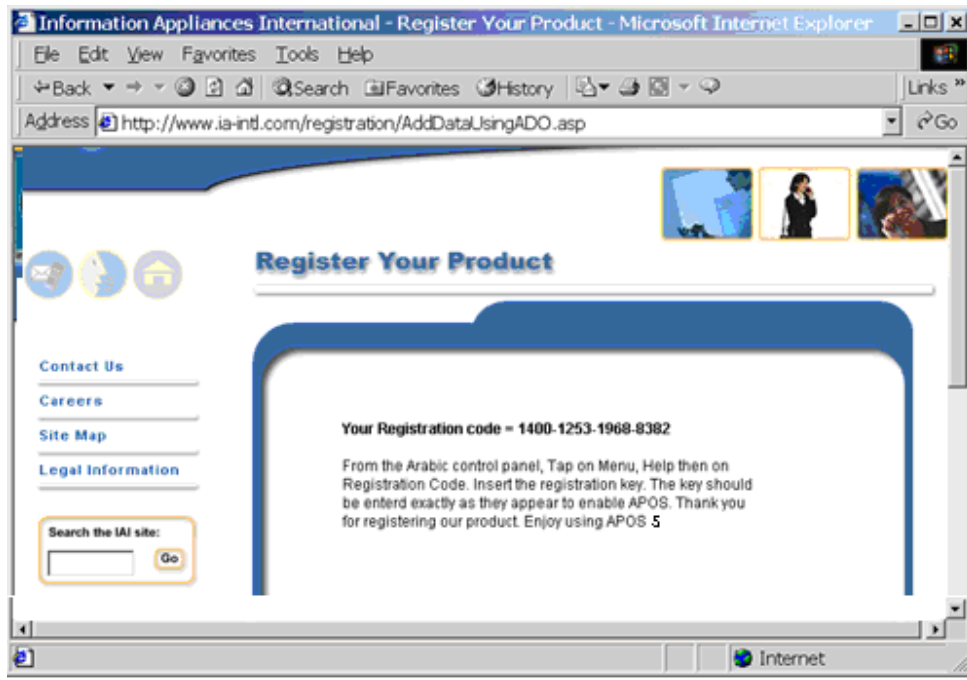


Figure 5: Registration code

Activation

To activate APOS, after synchronizing the application to the Palm, tap on the Arabic icon in the Applications menu to enter the Arabic control panel. Then:



Figure 6: APOS icon

- Tap the menu button and then the Help menu. Next, tap on the registration code menu item to open the registration form. Type in your registration key, and tap on Ok.

- Tap on the Arabic Support checkbox to enable the Arabic support and set your localization parameters.



Figure 7



Figure 8

Note that if you are running Arabic Windows, you need to reboot your PC after running the setup.exe.

If you are running another language version of Windows, then results may vary.

If you are not running any version of Windows (Mac for example), you will have to consult Palm Computing on this issue.

Also, APOST™ will work on non-English Palms like French or German. But, some words (in German for instance) will have an Arabic character in the middle because the two code pages overlap each other.

Have fun entering and using Arabic text in your Palm.

Using APOSTM

APOSTM adds Arabic support to all Palm Powered™ devices. It enables users to take full advantage of this new technology in the Arabic language. Figure 6 shows the APOSTM icon in the applications form.

The Arabic Control Panel

APOSTM comes with a control panel that allows the user to setup several options of the Arabic support. Once a user taps the APOSTM icon, a control panel application is displayed as in Figure 9. This application enables the Arabic mode by checking the Arabic support box. Once that is checked, the remaining settings options appear. Use the drop down box to choose your country from the list. The system will automatically change all the preferences set by INFORMOBILITY for that country.

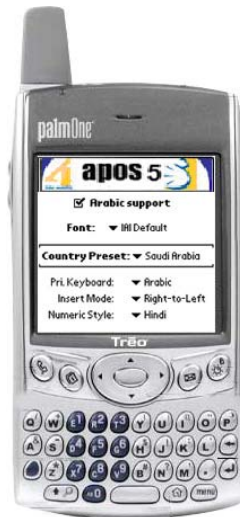


Figure 9: APOSTM Control Panel

APOSTM includes support for multiple font plug-ins which enables the user to install additional fonts that can be downloaded from INFORMOBILITY's web site at a later time. The **Font** option in the APOS Control Panel allows you to select your favorite fonts among those installed. INFORMOBILITY provides four font styles with APOSTM:

1. INFORMOBILITY Default
2. INFORMOBILITY LoRes.
3. Koufi LoRes
4. Diwani LoRes.

Pri. Keyboard field allows you to choose the primary keyboard language. Select the language that you want to use. If you choose the Arabic language for the keyboard, the virtual keyboard will display the Arabic letters with the ability to change to English letters. But your device keyboard will be only able to type the Arabic letters.

And if you choose the English language for the keyboard, the virtual keyboard will display the letters with the ability to change to Arabic letters. But your device keyboard will be only able to type the English letters.

Furthermore, the *Insert Mode* can be set to indicate the general direction of the text ***Right-to-Left & Left-to-Right***. The *Numeric Style* sets the style of numbers that your APOS™ uses. This setting is universal throughout the system regardless of usage of English text or being in English mode. Choose *Arabic/US* if you want to use the Arabic numbers used by the Western world and *Hindi* numbers to use the style adopted by most of the Arab world. APOS™ comes with a predefined setting for Arab countries. You can change this setting to your preferred values.

Entering Arabic Data Into Your Handheld

Similar to English data, you enter Arabic data into your handheld computer using one of the following methods:

- 1) By using the device keyboard. Fig (10) shows the English keyboard, Fig (11) shows the corresponding Arabic keyboard, and Fig (12) shows the Arabic keyboard when clicking “Shift” button.



Fig (10)



Fig (11)



Fig (12)

2) By using virtual Keyboard: there are two methods to view the virtual keyboard:

- Click (Menu+K) and the system will show the virtual keyboard immediately on the device screen Fig (13).



Fig (13)

- Click “Edit” from Pull Down Menu to view a list, select Keyboard and note that the system will view the virtual keyboard automatically on the device screen.

APOS™ does not interfere with your English Palm OS. Instead, it enables you to write Arabic text and switch the direction of the text according to the language. You can thus write Arabic text from right to left and still include some English words in the same RTL direction. Also, you can write English text from left to right and include Arabic words in it without changing the direction of the text.

Utilities

APOS™ also supports other Palm utilities. It provides Arabic as well as English sorting capabilities. The Find tool was also Arabized and works perfectly with Arabic and/or English text. Text selection is fully implemented and works for single language text as well as mixed Arabic/English text.

APOS™ also provides support for all Palm fonts: standard, bold, large, and large bold.

HotSync®

Since we are using the Windows CP-1256 character set, the Palm conduit and the Desktop application do not require any major changes. This makes HotSync a very straightforward operation. If you are using Arabic Windows and have used INFORMOBILITY 's CD to install APOS™, a patch would have been installed that fixes the problem with Arabic character display in Datebook and other parts of the Desktop software. In other words, with APOS™, you will see all the Arabic characters you entered on your Palm right in your Desktop application as soon as you synchronize, and vice versa.

Technical Support

Please note that you need to be a Palm OS user before using APOS. INFORMOBILITY cannot provide basic Palm support. For Palm support, you need to call Palm Inc. regional technical support office at +962-6-516-info(4636). If after reviewing this manual you cannot solve your APOS related problem, please contact us via e-mail at support@arabicpalm.com or visit our web site at <http://www.informobility.com/support> or www.ArabicPalm.com and click on the Support button.